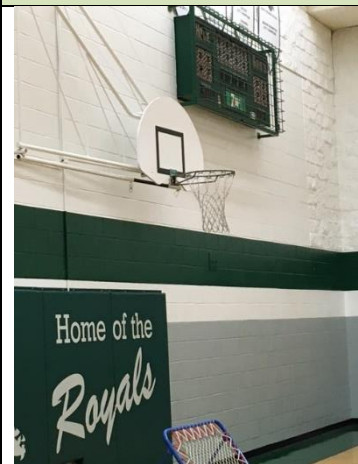


Facility: **Edith Rogers J.H.**

Last Updated: **Nov 7, 2017**  
Who: **MB**

Address: **8308 Mill Woods Rd NW**

Contact/Caretaker: **Terris Paliwada**



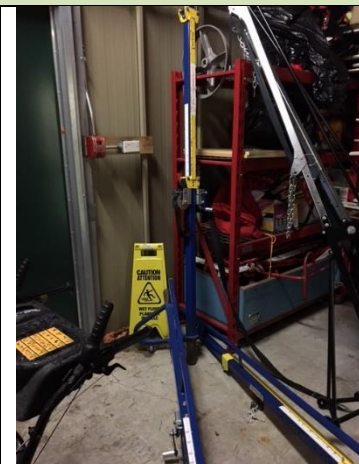
Basketball Hoops



Volleyball Nets



Post storage 1



Post storage 2

## General Information

**Parking:** Parking is available in the lot on the North/West side of the school which can only be accessed via Millwoods Rd.

**Entrance:** The entrance is connected to the North/West parking lot on the West side of the school. Players should leave outdoor footwear at the entrance.

**Gym Location:** Inside the entrance the gym is straight ahead then take the first right turn. The gym is then on the right.

**Changeroom/Washroom:** Players can change in the washrooms that are located inside the gym along the North wall.

**Floor:** The floors are hardwood with gray lines for the side of volleyball and black for the end lines. For basketball use black court lines.

## Equipment

**Sport Specific Equipment Location and details:** The volleyball nets are located along the South wall. The posts are stored in the storage room in the Southwest corner. The posts are labelled for the stage side and the peg board side. Ensure you put them in the correct sides. The shared centre post has arrows pointing to the side it should face. For height, use the highest holes on each of the posts.

## Gym Set-up

### Volleyball

**Step 1:** Pick the labelled nets for the 'stage side' and net for the 'pegboard side' and take to their respective sides.

**Step 2:** The net height is adjustable on each post with a pin – **use the highest hole on each of the posts** by pulling out the pin, sliding the sleeve and replacing the pin.

**Step 3:** Thread the rope from each pulley over the pulley and attach to the loops on the end of the net. For the post labelled pegboard, there is a 1ft wire attached to the bottom post loop that carabiners onto the bottom of the net. Attach net to opposite post by threading rope over the bottom pulley and looping onto the net. The top of the next will carabiner to the top post loop.

**Step 4:** Tighten the net on the top of the net using the crank wheel. Do NOT over-tighten.

**Step 5:** Repeat steps 2-4 for the second court

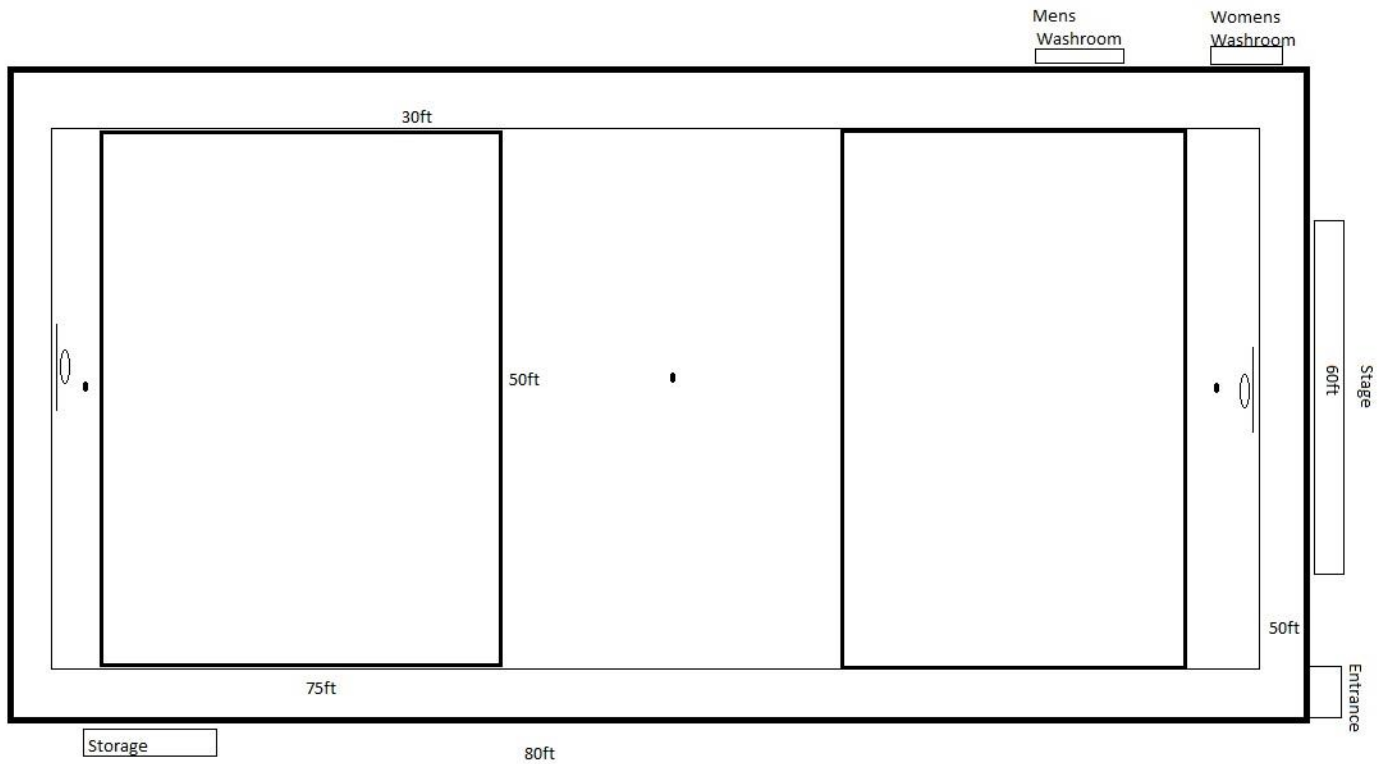


[www.EdmontonSportsClub.com](http://www.EdmontonSportsClub.com)  
17406 106a Ave, Edmonton, AB, T5S 1E6  
780.429.GAME(4263)

## Basketball

The hoops should be pulled out when you arrive, if they are not the tool is located in the storage room in the Southwest corner. This gym does have a 3pt line, however, due to the backboards and single rim should not be used for basketball

## Set-up Diagram



## Important Notes

Please do not wander the hallways during games.