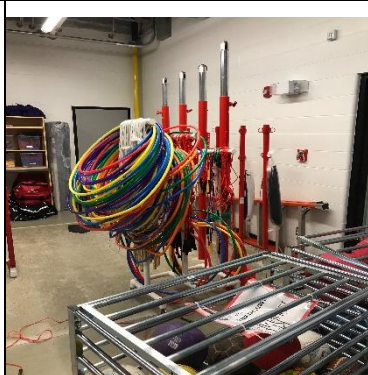
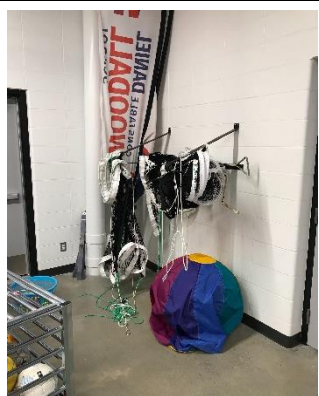


Facility: **Constable Daniel Woodall School**

Last Updated: **Sep 30, 2019**  
Who: **JG**

Address: 315 Windermere Rd NW  
Contact/Caretaker: Clint Vinson, Dori



Equipment room #1

Equipment room #2

Far side of gym

View from Gym Entrance

## General Information

**Parking:** Players can park in the Visitor and Staff Parking lot on the North West side of the building, closest to Windermere Rd NW.

**Entrance:** Enter through the main doors on the North West side of the building. Players will need to ring the doorbell and be let in by the custodian.

**Gym Location:** The Gym Entrance is straight ahead of you once you enter through the main doors.

**Change room/Washroom:** There is a single washroom inside the gym on the North wall. There are also washrooms across the hall from the main gym entrance.

**Floor:** The floor is hardwood, use 2 sets of green court lines for Volleyball and the 4 sets of white court lines for Badminton.

## Equipment

**Sport Specific Equipment Location and details:** Volleyball and Badminton nets/poles are stored in the Gym Storage room. This room is located on the farthest corner from the Gym Entrance. The doors are on the same wall as the washrooms and Phys. Ed. office. This room may be locked, if it is, ask the custodian to open it for you.

## Gym Set-up

### **Volleyball / Badminton:**

**Step 1:** Grab both sets of poles and nets from the equipment room, insert the poles into the proper wholes (about 3 feet outside the Volleyball Court for Volleyball posts and 1 foot away from Badminton courts for Badminton posts). There are two courts for Volleyball and 4 courts for Badminton.

**Step 2: Volleyball** - The poles should be set to men's height (second line, tighten bolt to secure post height.) Run top rope of the net over the black wheel on the top of the post and attach rope to anchor on about 1/3 of the way down the post. Repeat for the other post. Tighten crank, but do not over tighten! **Badminton** – Insert all poles into the correct holes. Take one net, attach to one post using the anchor on the side of the post. Attach to opposite post by pulling tight and wrapping around the anchor. Twist the poles if needed to tighten further. Each court has its own net, so repeat for each court used.

# Set-up Diagram

## Important Notes

If the Basketball nets are in the lowered position, the controls to raise the net is in the Phys. Ed. Office. This office is the first set of doors closest to the gym entrance. If it is locked, ask the custodian to open it for you/ have the custodian raise the nets for you. The controls for the divider curtain are also in this office and can be used when playing Volleyball.

