

Facility: Crossing Park – Elementary Wing
(School)

Last Updated: Jan 9 2023
Who: JB

Address: 500 Martindale Boulevard NE
Contact/Caretaker:



Photo #1

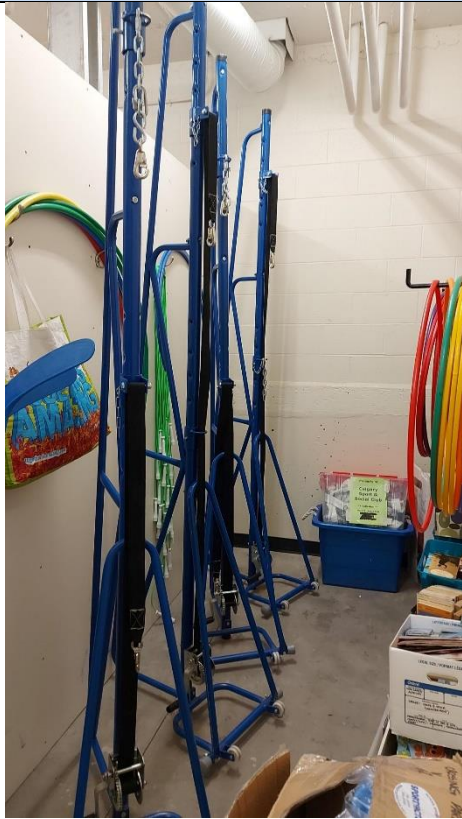


Photo #2



Photo #3

General Information

Parking: Players may **NOT** park in any reserved parking stall **AT ANY TIME**. Players can park in the staff lot on the Northwest end of the school.

Entrance: Players should enter from the main entrance on the West side of the building. The doors will only be unlocked 15 minutes prior to first game. Please ring doorbell to get in if the doors are locked. Players should leave outdoor footwear at the entrance.

Gym Location: There are 2 gyms at this school (Junior High Wing + Elementary Wing). The Elementary gym is on the left of the main hallway. It has a stage door and is closer to the main office than the other gym.

Change room/Washroom:

Floor: Wooden floor

Equipment

Sport Specific Equipment Location and details:

Posts: The school owns 4 dark blue high school caliber volleyball posts. They each have a crank wheel with a strap; net height is adjustable. The posts are stored in the equipment room of the gym (located just inside the stage door on the office side).

Post Holes: Use the post holes that are closest to the court lines, approximately 3 feet outside the



www.CalgarySportsClub.com
Unit 180 - 4411 6th Street SE, Calgary, AB, T2G 4E8
403-244-PLAY(7529)

court.

Nets: CSSC owns 2 nets. They are labeled TVN200 and are kept in a box labeled 'CSSC Volleyball'. The box is stored in the same equipment room as the posts, on the floor right beside the posts. If the box or nets are not in this location, school staff likely moved the nets over to the Junior High equipment room (located along the same wall, outside of the gym in a second equipment room). If this is the case, please ask the caretaker to help you retrieve them from the Junior High wing.

Court Lines: Court lines are yellow all around.

Gym Set-up

Volleyball

Step 1: Choose one post that cranks the net on the bottom and one that cranks the net on the top for each court.

Step 2: The net height is adjustable on each post – set it to the 2nd hole from the top.

Step 3: Each net has a cable loop on all 4 corners. Attach the top of one corner of the net to the s-hook on the top of the post and the other top corner to the s-hook on the rope.

Step 4: Repeat for the bottom of the net, but the rope and crank will be on the opposite side.

Step 5: Tighten the net on the top and bottom using the crank wheel. Do NOT over-tighten.

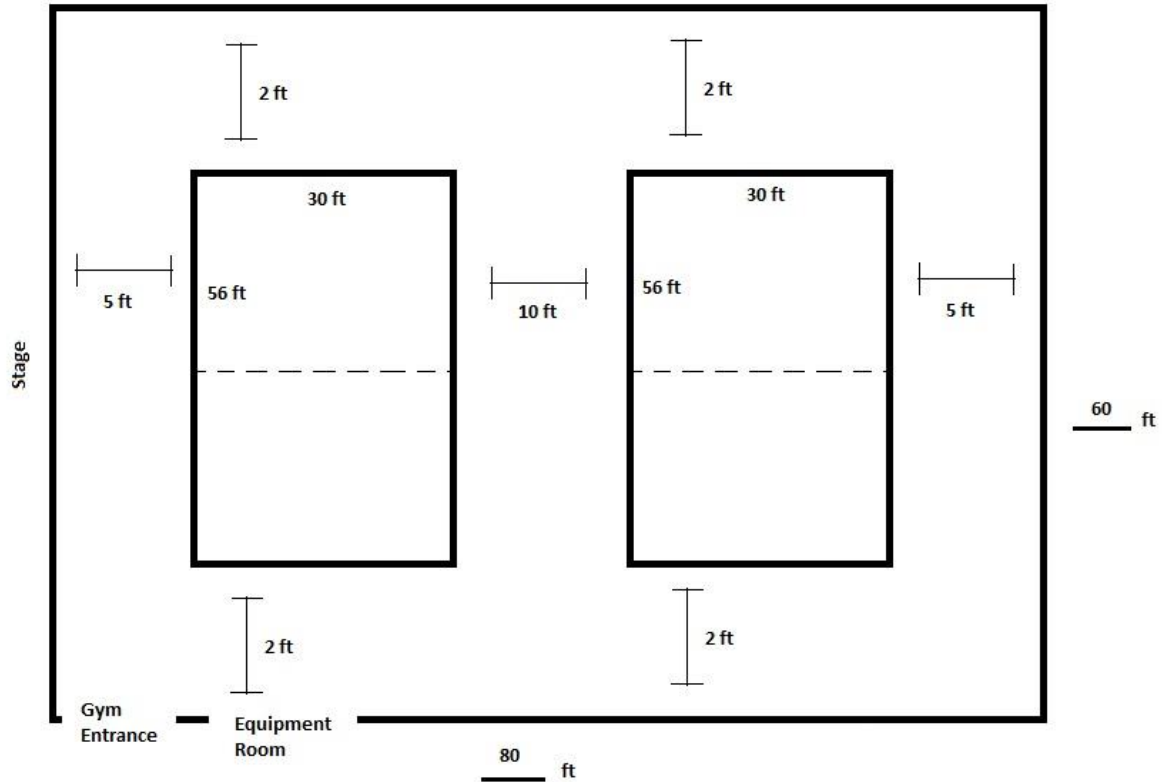
Basketball

Court Lines: Black all around

Player Benches: Players can use the benches along the wall

Set-up Diagram





Important Notes

- Do not prop doors open at this facility. If the doors are locked, there is a doorbell to be used.
- No food or gum is permitted to be in the gym.