

Facility: Crescent Heights – Aux (H.S.)

Last Updated: Sep 27
2022
Who: JB

Address: 1019 1 Street NW

Contact/Caretaker:

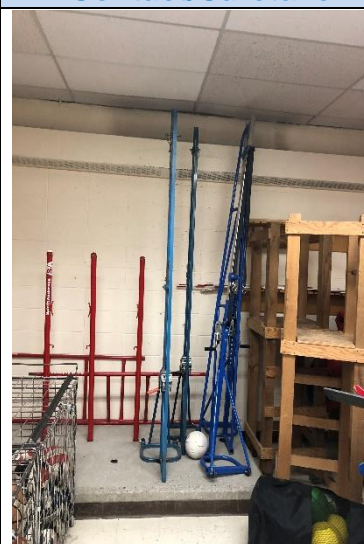


Photo #1



Photo #2



Photo #3



Photo #4

General Information

Parking: Players may **NOT** park in any reserved parking stall **AT ANY TIME**. Players can park in the covered lot off of 9 Avenue on the southeast corner of the school or in the open lot off 11 Avenue on the northwest corner of the school. Do **NOT** park on 1 Street as cars will be towed.

Entrance: Players can enter from the door off of either parking lot. The main entrance will be locked. Players should leave outdoor footwear at the entrance.

Gym Location: If you enter from the 9 Avenue parking lot doors, go up the full flight of stairs on your left as you enter the school. On the second floor, turn immediately left go through the double doors. Then the gym will be directly to your right. If you enter from the rear 11 Avenue parking lot doors, go immediately left down the hallway, past the main gym, until you see the full flight of stairs on your left. Go up the stairs to the second floor and turn immediately left to go through the double doors. Then the gym will be directly to your right.

Change room/Washroom: Washrooms are located just outside of the Aux gym in the hallway.

Floor: Wood

Equipment

Sport Specific Equipment Location and details:

Posts: The school has 4 blue posts in the equipment room of the Aux gym. The equipment room is located within the gym, along the left-hand wall when entering through the door. The posts are kept in holes standing up. Please ensure that go back in this spot (see photo above). All 4 poles are blue, but 2 are a light blue and the other 2 are dark blue. Pair them together based on the post colour.

Post Holes: Post holes are located approximately 3 feet from the sidelines.

Nets: The school owns the nets. They are stored in the same equipment room as the posts. They are hanging on the wall near the back of the room behind the divider (see photos 2 and 3). Please ensure that both nets are hung back up on these hooks at the end of the night (see photo above).



www.CalgarySportsClub.com
Unit 180 - 4411 6th Street SE, Calgary, AB, T2G 4E8
403-244-PLAY(7529)

Court Lines: Court lines are yellow all around.

Gym Set-up

Volleyball

Step 1: Choose one post that cranks on the bottom and one that cranks on the top for each court. 2 posts are light blue and 2 posts are dark blue, they should be paired together.

Step 2: Adjust the top metal sleeve on all posts to the 2nd hole from the top. This will set the net to 7ft 11 ³/₄" (8ft).

Step 3: On the corner of each net there is a loop on the end of the cable. Attach the loop on the top corner of the net to the S-hook on the rope from the post and then attach the S-hook on the top of the net to the metal loop on the opposite post.

Step 4: Repeat for the bottom of the net, but the rope and crank will be on the opposite side.

Step 5: Tighten the net on the top and bottom using the crank wheel. Do NOT over-tighten.

Important Notes

- Please do not prop doors open at this facility. The main doors will remain locked but the side doors off the parking lots will be open for player access.

